

# MODUSIM 2.0 USER MANUAL

## Part 1. INSTALLATION

### 1.1 Backup Disk

Before any installation begins, it is always a good practice to backup the program diskette in the back of the report. We assume you are already familiar with DOS commands or Windows operation. For example, in DOS you will need the DISKCOPY command to make backup copies of your program disk.

### 1.2 System Requirements

To run MODUSIM 2.0, you must have a 386 or 486 based PC with 2MB RAM at least, MS DOS 5.0, Windows 3.0, EXCEL 4.0 and @RISK 3.0. A math co-processor chip is recommended for a 386 based PC, 486 based PCs come with one.

### 1.3 Installation

To install MODUSIM 2.0, first copy all the files in the attached disk to your hard drive under the directory "c:\MODUSIM". Then you can open the file 'MODU.XLW' directly from EXCEL4.0 & @Risk3.0. Or you can specify the program group name, item name, and the path of MODUSIM to windows. Type WIN to execute Windows, select New from File menu in program Manager to add the program group. The following window will appear, select Program Group and then OK.

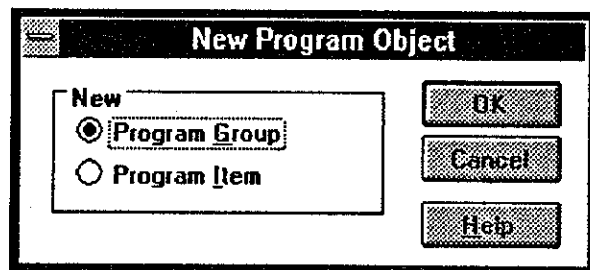


Figure 1.1: Select 'Program Group' for the MODUSIM Program.